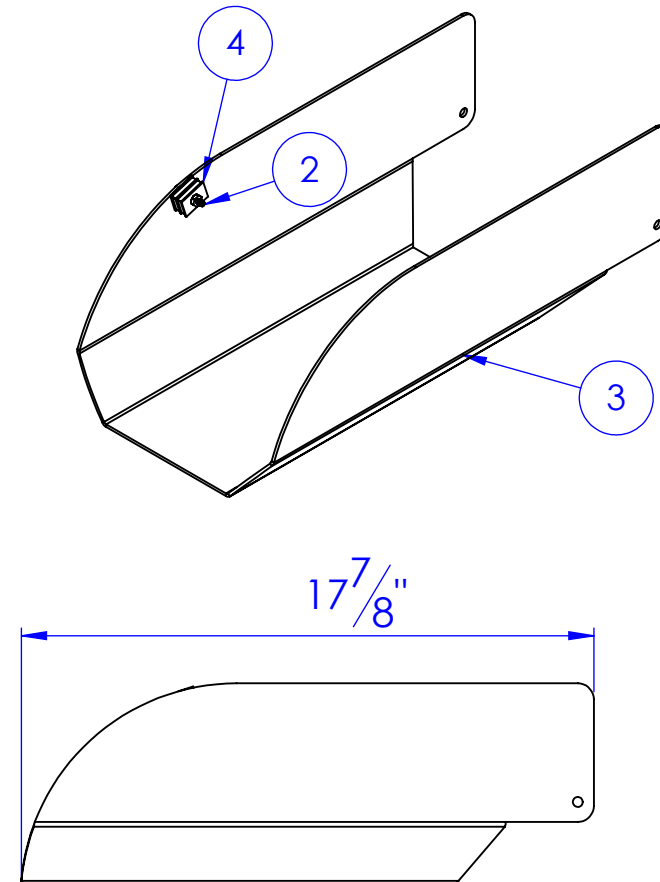
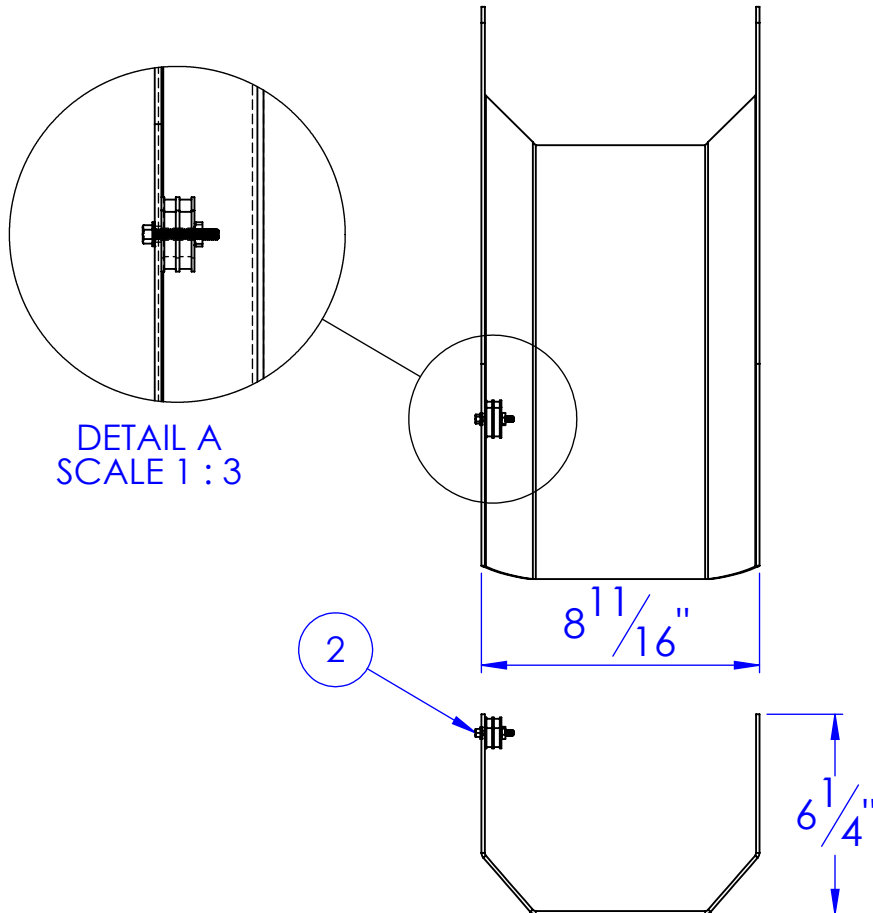


ITEM NO.	PART NUMBER	DESCRIPTION	Material	DRAWING #	QTY.
1	BO-8-32 HN SS	HEX NUT 8-32 SS		STOCK	1
2	BO-8-32X1 HCS	BOLT 8-32 x 1,	Steel	STOCK	1
3	FP-HF-DISC8-SPOUT	HYDRA FEEDER DISC. 8 SPOUT	12ga HRS	30-2410	1
4	HD-MAG 84 X 50-100	MAG 84 X 5 X 100		STOCK	1

REVISIONS			
REV.	DESCRIPTION	DATE	APPROVED
A	INITIAL RELEASE FROM DWG 30-1408 C	11/26/2022	HP



DRAWING LOCATION:

M:\Drawings\Ethan\Solidworks drawings\30 HYDRA FEEDER\0400 HF Options\1400 Fabrication

ASM. LOCATION:

M:\Drawings\Ethan\Solidworks drawings\SOLIDWORKS MODELS\HF

PROPRIETARY AND CONFIDENTIAL


THE INFORMATION CONTAINED IN THIS DRAWING IS THE SOLE PROPERTY OF HYDRABEDS. ANY REPRODUCTION IN PART OR AS A WHOLE WITHOUT THE WRITTEN PERMISSION OF HYDRABEDS IS PROHIBITED.

UNLESS OTHERWISE SPECIFIED:

DIMENSIONS ARE IN INCHES
TOLERANCES:
FRACTIONAL $\pm 1/16$
ANGULAR: MACH ± 1 BEND ± 1
TWO PLACE DECIMAL ± 0.010
THREE PLACE DECIMAL ± 0.005

MATERIAL

DO NOT SCALE DRAWING

	NAME	DATE	P.O. BOX 248, SABETHA, KS 66534 (785) 284-3674 FAX (785) 284-3931		
D: DRAWN	HEATH	11/26/2022			
PART #	.				
ASM #	HF-KHF-DISC8SPOUTASY				
COMMENTS:					
KIT 8" DISCHARGE SPOUT, HYDRA FEEDER			SIZE	DWG. NO.	REV
			A	30-1419	A
			SCALE: 1:10	WEIGHT: 8.30	SHEET 1 OF 1

